
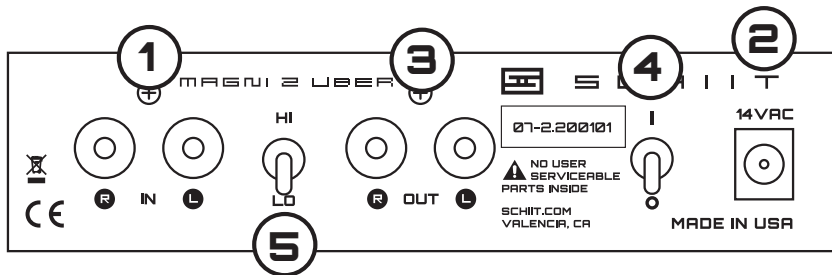


ITEM	OWNER'S MANUAL		
FOR	<b>MAGNI 2 UBER</b>		
DESCRIPTION	FULLY DISCRETE, HIGH POWER HEADPHONE AMP AND PREAMP		
MODEL NO	<b>SCH-07-2U</b>	REV <b>B</b>	RANDOM NUMBER <b>1</b>
NOTES	<p>IN NORSE MYTHOLOGY, MAGNI WAS ONE OF THOR'S SONS.  THERE WAS NO MAGNI 2 OR MAGNI 2 UBER. WE JUST MADE THOSE UP.  MAGNI 2 UBER IMPROVES ON MAGNI 2 IN A WHOLE BUNCH OF WAYS,  AND IT HAS A COOL ALUMINUM TOP CHASSIS.  OR IT MIGHT BE WARM, IF IT IS ON.  HOWEVER, THIS IS NOT A CAUSE FOR ALARM.</p>		
 <b>SCHITT</b>		<b>AUDIO COMPONENTS</b>	

ITEM

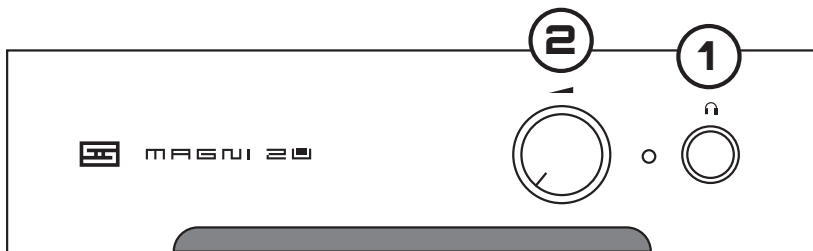
## ON THE BACK



- 1** Connect your source to the Magni 2 Uber's "IN" RCA jacks with high-quality RCA cables. Alternately, you can use crappy cables if you really want to.
- 2** Connect the supplied 24VA wall-wart cable to the jack labeled "14VAC." Do not use any other wall-wart, unless for some bizarre reason you want to downgrade to Magni 2's 16VAC, 8VA wall-wart.
- 3** Optional: Connect the preamp outputs to powered monitors or an external power amp.
- 4** Turn on the switch. The protection relay will mute the output for 8-10 seconds, then it will engage with a click.
- 5** Select HI or LO gain, depending on your headphones. IEMs and earbud style headphones will probably need LO gain. If you don't have enough volume control range, use LO gain.

ITEM

## ON THE FRONT



1 Connect your headphones to the headphone jack, marked with a headphone icon. For smaller headphone plugs, you may need a 1/8" to 1/4" adapter (not supplied.)

2 Control volume with the single knob on the front. It should be obvious which one it is. It controls both the headphone volume and the preamp volume at the same time. We recommend you stop increasing volume before your headphones explode. Remember, Magni 2 Uber puts out 1.5W into 32 ohms—it's pretty powerful for its size!

**Note:** when headphones are plugged in to the Magni 2 Uber, the preamp outputs will mute.

And that's it! Enjoy your music!

## WHAT'S IN THE BOX

(1) Magni 2 Uber	(0) Headphone adapters	(0) Battery packs
(1) Wall-Wart (very nice!)	(2) Aluminum parts (knob and top)	(128) Total components
(4) Stick-on feet (see above!)	(0) Sexy handcrafted chassis	(1) Robotic assembly
(0) RCA Cables	(0) Free unlimited downloads	(1) Human test



Application for Council Directives 72/23/EEC  
Conformity declared for EN60065, EN50082-1

## 2-YEAR LIMITED WARRANTY

Schiit Audio warrants to the original purchaser that this product shall be free from defects in material and workmanship for two (2) years from the date of purchase. If a defect covered by this warranty occurs during this period, Schiit Audio will repair the defective product, free of charge. Date of purchase will be based on customer receipts, otherwise date of manufacturing will be used.

**If you believe you need warranty service, contact us first.** Schiit Audio products sent back to us without a Return Authorization (RA) will be returned to the sender without repair. To contact us and obtain an RA, email [tech@schiiit.com](mailto:tech@schiiit.com).

**Warranty Limitations.** This warranty shall not apply if a product: (a) is modified or tampered with; (b) is damaged by negligence, accident, unreasonably use, or other causes unrelated to defective materials or workmanship, or (c) has had the serial number altered or removed.

Any implied warranties, including warranties of merchantability and fitness for a particular purpose, are hereby limited in duration to the warranty period of 2 years. In no event shall Schiit Audio be liable for consequential or incidental damages resulting from the breach of any implied or expressed warranties. Some state do not allow these limitations, so they may not apply to you. You may also have other rights which vary from state to state or province to province.



S C H I I T

SCHIIT.COM  
TECH@SCHIIT.COM