


ITEM	OWNER'S MANUAL		
FOR	<h1>JOTUNHEIM</h1>		
DESCRIPTION	CONFIGURABLE DESKTOP CONTROL CENTER		
MODEL NO	SCH-14	REVISION A	RANDOM NUMBER <input checked="" type="checkbox"/>
NOTES	<p>IN NORSE MYTHOLOGY, JOTUNHEIM IS THE LAND OF THE GIANTS. OUR JOTUNHEIM ISN'T EXACTLY GIANT IN DIMENSIONS. BUT IT MAY BE GIANT IN IMPACT. THE FIRST CONFIGURABLE DESKTOP CONTROL CENTER MAKES DAC/AMPS SEEM SO "LAST DECADE." USE IT AS AN AMP, AN AMP/DAC, OR AMP/PHONO PRE, OR MORE... YOUR CHOICE. NO OBSOLESCENCE. WELCOME TO JOTUNHEIM.</p>		
 SCHITT		AUDIO COMPONENTS	

WELCOME TO JOTUNHEIM

Jotunheim is the first configurable desktop control center. It combines a highly capable balanced and single-ended headphone amp and pre-amp with a modular architecture that allows you to add a DAC, phono preamp, or any future modules we come up with. Forget the built-in obsolescence of other amp/DACs, and enjoy your time in Jotunheim!

IN THE BOX

ONE Jotunheim
ONE Power cord
ZERO Stick-on feet (!)
(they're pressed in)

SAFETY INSTRUCTIONS



The following is required by the roughly 9,542 government agencies and regulations we have to comply with. If you have some common sense, they should seem pretty straightforward. In any case, read these instructions before proceeding farther, follow all instructions, and heed all warnings. Or else!

1. If you don't know how to install audio devices, get a qualified professional to help.
2. Never use this device near water, and clean only with a dry cloth.
3. Assure adequate ventilation, do not block any ventilation openings, or place near heat sources.
4. Use only the supplied power cord or suitable replacement. Route cords away from traffic areas and protect them from being pinched. Unplug the cord from the outlet if the apparatus is unused for a long period of time.
5. To prevent electric shock, do not use the plug with an extension cord, receptacle, or outlet unless blades can be fully inserted.
6. Refer all servicing to qualified service personnel. Service is required when the device has been damaged, including cord or plug damage, liquid has been spilled or objects have fallen into the device, the device has been exposed to rain or moisture, does not operate normally, or has been dropped.



WARNING: TO REDUCE THE RISK OF FIRE OR ELECTRIC SHOCK, DO NOT EXPOSE THIS DEVICE TO RAIN OR MOISTURE.

GETTING STARTED

1. If you chose Jotunheim as an amplifier only (no DAC or phono card), simply:

- a. Plug it in with the supplied power cord
- b. Connect your inputs and outputs (sources, headphones, powered monitors, power amp, you know, whatcha got) per the guide on the next page.
- c. Turn on the amp, select the correct input, wait 15-20 seconds for the relay protection to engage the output, and enjoy.

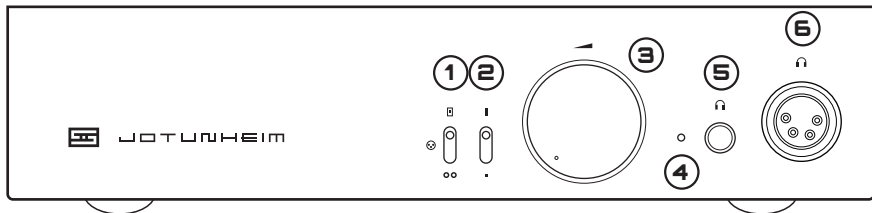
2. If you chose Jotunheim with the optional DAC card, you'll also need to connect your source to the DAC module.

- a. Use a high-quality, USB 2.0-rated cable of 2M or less in length.
- b. On some Windows machines, you will also have to install drivers, which are available at schiiit.com/drivers.

3. If you chose Jotunheim with the optional phono card, you'll also need to connect your turntable.

- a. Using short, high-quality, well-shielded cables, connect the RCA outputs of your turntable to the RCA inputs on the Jotunheim.
- b. Also connect the turntable ground to the ground post with a short, sturdy wire. This helps ensure minimum hum.
- c. Note that the phono preamp's gain is fixed at 42dB, input impedance is 47k, and load capacitance is 100pF. In English, this means that the Jotunheim's phono card will work well with most moving magnet (MM) cartridges.

FRONT CONTROLS



1 Input Switch. If the name wasn't clue enough, this selects the input. All the way up for the internal card (DAC or phono), middle for balanced input, bottom for SE input. Hint: if you don't have a card installed, you won't hear anything when the card input is selected.

2 Gain Switch. Up is high gain, down is low.

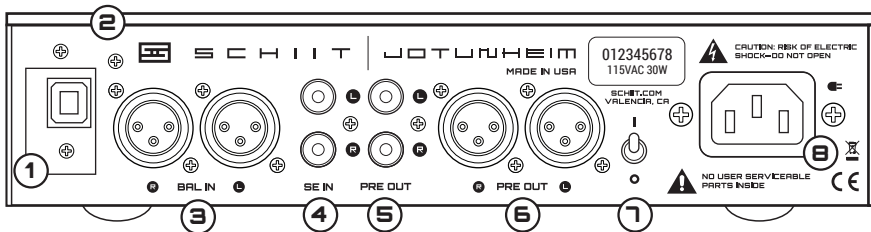
3 Volume Knob. Turn it to the right to make the music louder. Stop before smoke comes out of your cans.

4 Power On LED. Do we really have to tell you what this one does?

5 SE Headphone Jack. Plug in standard headphones here (with "standard" being defined as "most headphones with the typical 1/4" headphone plug you recognize, and if you have 1/8" plug headphones, you can use an adapter.")

6 Balanced Headphone Jack. Plug in your fancy-pants balanced headphones here, using a 4-pin male XLR plug conforming to the K1000 output jack wiring specification. Ensure no pins are shorted to each other or tied to ground, or bad things can happen.

REAR CONNECTIONS



1 Card Input.

If you have a module installed, the input for the module will be here. If you don't have a module installed, it will be covered.

2 Ground Lug.

If you have a phono card installed, there will be a ground lug here. Connect to your

turntable ground for minimum hum.

3 Balanced Input.

Connect a balanced source via XLR cables at this input.

4 SE Input.

Connect a standard source here via RCA cables.

5 SE Preamp Output.

Connect to powered monitors or a speaker amp.

6 Balanced Preamp Output. Connect to powered monitors or a speaker amp.

7 On-Off Switch. Up is on. Down is off. Pretty simple, right?

8 AC Input. Plug the power cord in here. Plug the other end into an outlet of the correct voltage. Trying to run a 115V product on 230V will blow the fuse and generally make for a bad, bad day.

FAQ

I hear hum through the headphones, what do I do?

You may have a ground loop. To fix a ground loop, try a ground loop isolator or an EbTech HumX. If it's low-level hum and noise, you can use Lo gain to reduce it.

There's no sound for a while after I turn Jotunheim on.

That's perfectly normal. Jotunheim delays the headphone output for 20 seconds after you first turn the amp on.

There's no sound with the input switch in the top position.

Do you have the optional DAC or phono card? If you don't, you won't get any sound.

Can I leave Jotunheim on all the time?

Yes, you can.

Can I use both headphone outputs at the same time?

Yes, you can, but be careful—if the headphones you aren't using are very sensitive, you may hurt them if the amp is turned up too far.

It doesn't turn on, what do I do?

Plug it in to a different AC socket. Ensure you are not currently in a blackout. Then email us if it still doesn't work.

SPECS

Frequency Response: 20Hz-20Khz, -0.1db, 2Hz-700KHz, -3dB

Balanced Headphone Output:

Maximum Power, 32 ohms: 5000mW

Maximum Power, 300 ohms: 900mW

Single-Ended Headphone Output:

Maximum Power, 32 ohms: 1500mW

Maximum Power, 300 ohms: 350mW

THD: <0.001%, 20Hz-20KHz, at 1V RMS

IMD: <0.0015%, CCIR

SNR: >109db, A-wtd, ref to 1V RMS

Crosstalk: >-70dB, 20 Hz-20KHz

Output Impedance: Less than 0.1 ohms

Gain: 2 (6dB) or 8 (14dB)

Power Consumption: 25W typical

Size: 9" x 6" x 2"

Weight: 6 lbs

5-YEAR WARRANTY

Schiit Audio warrants to the original purchaser that the product shall be free from defects in material and workmanship for five (5) years from the date of purchase. Exceptions: Tubes. Tubes are covered by a 90-day limited warranty with the same terms. If a defect covered by this warranty occurs during this warranty period, Schiit Audio will repair the defective product, free of charge. Date of purchase will be based on customer-submitted receipts, otherwise date of manufacturing will be used to determine warranty period.

If you believe you need warranty service, CONTACT US first. There may be a simple solution to your problem. Schiit Audio products sent back to us without a RETURN AUTHORIZATION (RA) will be returned to the sender without repair. To contact us and obtain an RA, email support@schiit.com. We will respond quickly to either phone or email messages.

WARRANTY LIMITATIONS

THIS WARRANTY SHALL NOT APPLY IF THIS PRODUCT: (a) IS MODIFIED OR TAMPERED WITH; (b) IS DAMAGED BY NEGLIGENCE, ACCIDENT, UNREASONABLE USE, COFFEE, OR BY OTHER CAUSES UNRELATED TO DEFECTIVE MATERIALS OR WORKMANSHIP; OR (c) HAS HAD THE SERIAL NUMBER ALTERED, DEFACED OR REMOVED.

ANY APPLICABLE IMPLIED WARRANTIES, INCLUDING WARRANTIES OF MERCHANTABILITY AND FITNESS FOR A PARTICULAR PURPOSE, ARE HEREBY LIMITED IN DURATION TO THE WARRANTY PERIOD (5 YEARS). IN NO EVENT SHALL SCHIIT AUDIO BE LIABLE FOR CONSEQUENTIAL OR INCIDENTAL DAMAGES RESULTING FROM THE BREACH OF ANY IMPLIED OR EXPRESS WARRANTIES. SOME STATES DO NOT ALLOW LIMITATIONS ON HOW LONG AN IMPLIED WARRANTY LASTS OR EXCLUSION OF CONSEQUENTIAL OR INCIDENTAL DAMAGES, SO THE ABOVE LIMITATIONS MAY NOT APPLY TO YOU.

This warranty gives you specific legal rights. You may also have other rights which vary from state to state or province to province.

Contact us at: Schiit Audio, 24900 Anza Drive, Suite A, Valencia, CA 91355 USA, info@schiit.com

ITEM

OWNER'S MANUAL BACK COVER

GRAPHIC FOR THE BACK COVER OF THE MANUAL

NOTES

YES, ALL SCHIIT PRODUCTS ARE MADE IN THE USA.
YES, PRIMARILY OF US-SOURCED COMPONENTS.
YES, IT'S PRONOUNCED EXACTLY LIKE YOU THINK.



Application for Council Directives 72/23/EEC
Conformity declared for EN60065, EN50082-1



SCHIIT

HAPPENS